

KNOW THE INTERNET FACTS

1. BYTES > BITS

10 Megabytes per second (MBps) is faster than 10 Megabits per second (Mbps).

2. DOWNLOADS & UPLOADS

Downloads are when you receive data to your computer; uploads are when you send data from your computer.

3. YOU DON'T HAVE TO HAVE FIBER TO BE FAST

4. BROADBAND ≠ INTERNET

Broadband is "high speed" internet access. The FCC says broadband is 25 Mbps for downloads & 3 Mbps for uploads.

CHOOSE A PROVIDER

Currently, there are three major internet service providers serving businesses in downtown Athens.

CHARTER SPECTRUM

Thelma McNeil
thelma.mcneil@charter.com

+1 (678) 739-6743

AT&T

Kanetra Washington
kw139j@att.com

+1 (678) 756-0487

PARKER FIBERNET

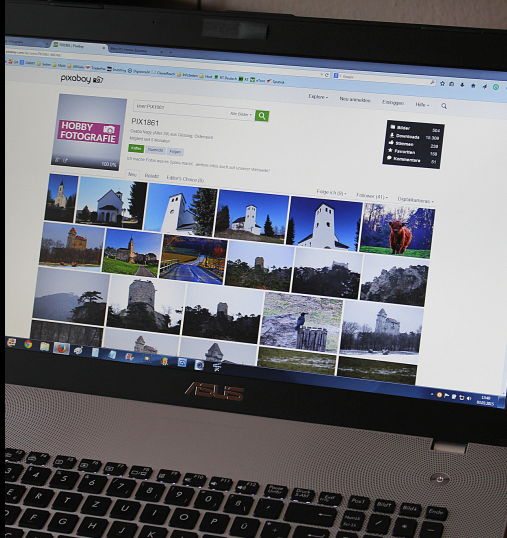
+1 (800) 872-7537

preston@parkersystems.net

If you have any questions or concerns about your internet access, let the ADDA hear from you! Call (706) 353-1421.
david@downtownathensga.com
linda@downtownathensga.com

ADDA'S GUIDE TO INTERNET LITERACY

SIX STEPS TO INTERNET SAVVY



MISSION-MINDED

Before choosing an internet provider, think about how internet access is connected to the mission of your business. If you run a tech business, need a strong security system, stream videos, or advertise wifi to your customers, you need higher capacity than you need for checking emails or downloading simple word files. If internet access is mission-critical for your business, you should consider subscribing for more bandwidth.

1

We all know that technology changes at rocket velocity. Older devices are not capable of operating at top speed. If you have an outdated computer, credit card system, router, or modem, the age of your device may cause you to have slower speeds.

3



CHECK YOUR TECH

MEASURE THE DISTANCE

The cords used to transmit data to and from your business go through a "hub" that your provider owns and uses to connect you to its larger network. For each provider, the distance between your business and their "hubs" affects your service, in either cost or speeds. Make sure to ask your provider how distance will impact your internet.

5

BANDWIDTH DEMAND

Bandwidth is the capacity of your internet and is measured in amounts of data transferred per second. The more individuals you have on your network and the more data you need to download or upload, the more bandwidth you need.

2

Mega < Giga < Tera

KNOW YOUR CORDS

There are three types of cords used for broadband service. Fiber is glass-based and, if well maintained, is capable of fastest speeds. Coaxial (or "coax") is a cable cord and capable of speeds up to one gigabit. Twisted pair cabling (or UTP or STP) is wired in most buildings and is the basis of the Ethernet network. Your provider should tell you what speeds are available at your location.

4



RUN A SPEED TEST

Once you've chosen a provider, you can run a speed test at any time to make sure you are getting the service for which you pay. Each provider offers their own speed test on their website. Google offers a free speed test through M-Lab, or there's one at www.speedtest.net. If your speeds aren't close to your contract speeds, contact your ISP.

6